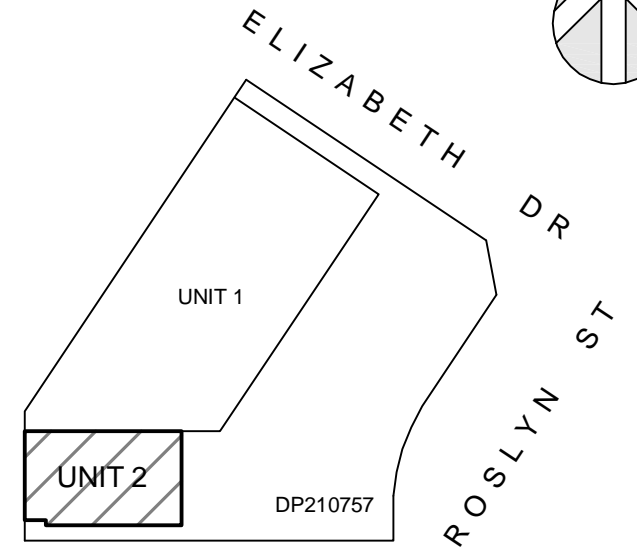
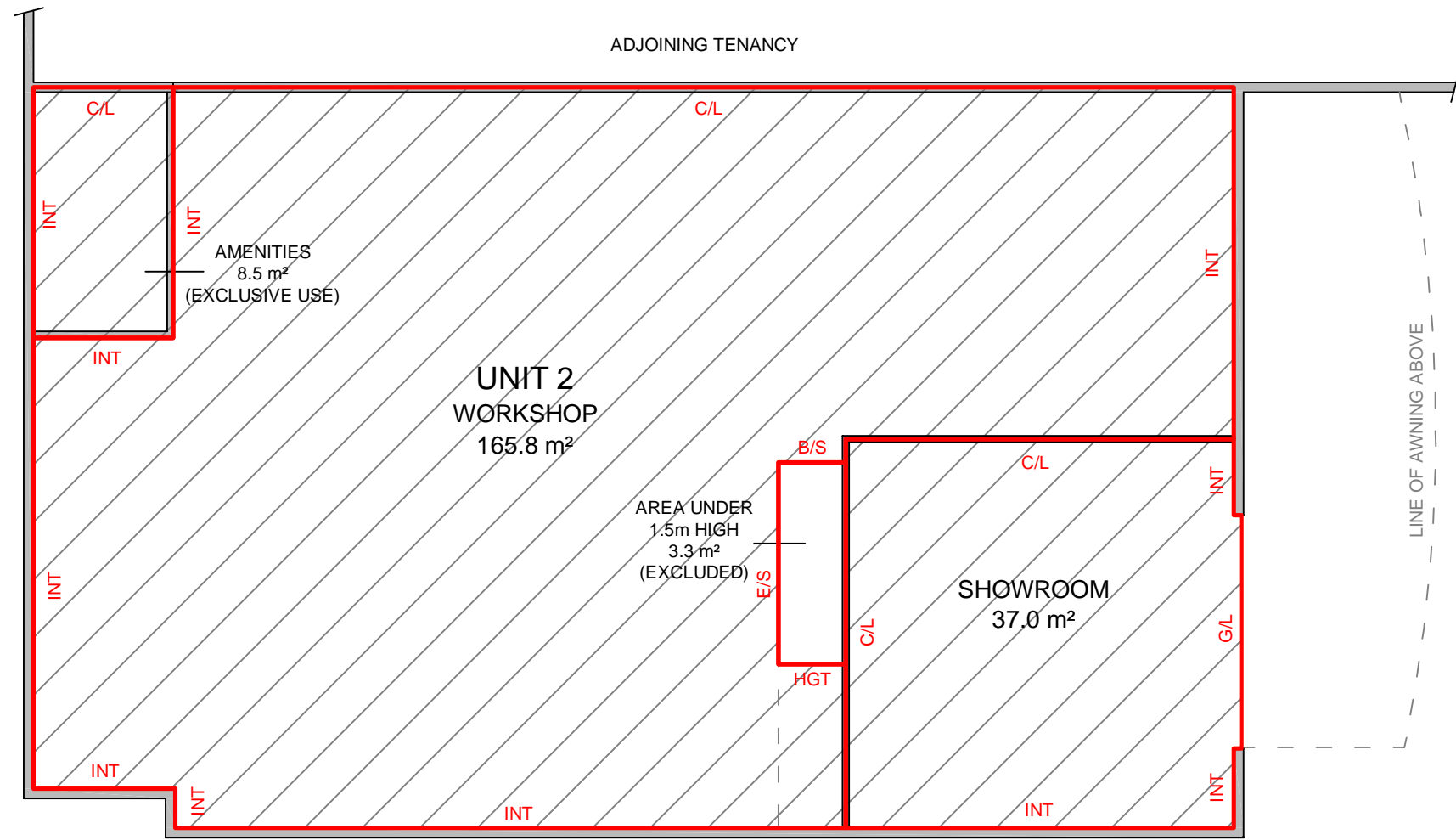
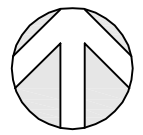


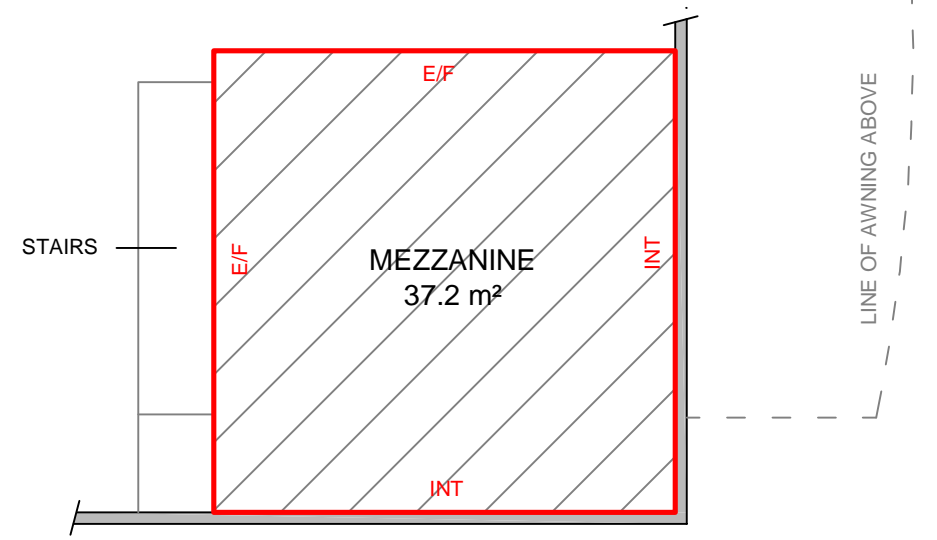
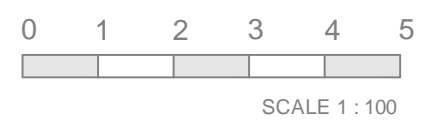
LETTABLE AREA PLAN FOR UNIT 2, 1 ROSLYN STREET, LIVERPOOL, NSW



LOCATION PLAN
NOT TO SCALE

GROUND FLOOR

- INT - INTERNAL FACE
- C/L - CENTRELINE WALL
- G/L - GLASS LINE
- E/F - EDGE OF FLOOR
- E/S - EDGE OF STAIRS
- B/S - BOTTOM STEP
- HGT - AREA MEASURED TO 1.5m HIGH



SCHEDULE OF AREAS

GROUND FLOOR	
WORKSHOP	165.8 m ²
AMEN. (EXCLUSIVE USE)	8.5 m ²
SHOWROOM	37.0 m ²
MEZZANINE	37.2 m ²
TOTAL AREA	248.5 m²

LETTABLE AREA

METHOD OF MEASUREMENT

AREAS HAVE BEEN CALCULATED IN ACCORDANCE WITH THE PROPERTY COUNCIL OF AUSTRALIA (PCA) METHOD OF MEASUREMENT FOR LETTABLE AREA (MARCH 1997)

(SURVEY DATE 26/08/2013)

GUIDELINES USED

GROSS LETTABLE AREA - RETAIL

PLAN PREPARED FOR:
EXCEL DEVELOPMENT GROUP

LETTABLE AREA PLAN
UNIT 2, 1 ROSLYN STREET,
LIVERPOOL, NSW

DATE: 26/08/2013	
REF: 50585	REV: -
DRAWN: CLA	CHECKED: CL
SCALE: 1:100 @ A3	SHEET: 1 of 1

sydney canberra melbourne brisbane adelaide perth

REALSERVE P 02 9629 9377
F 02 9475 5050

Real Estate Plans & Surveys www.realserve.com.au